

The Rockhampton Homebuilder's Guide



Simplifying Your Journey to a Complete, Move-In Ready Home



When taking the first steps in your custom home journey, it's natural to encounter uncertainties, especially regarding the stability and affordability of your builder.

Too often, impersonal services and complex processes lead to feelings of frustration and unease. These issues can create doubts, making you question if your dream home will ever become a reality.



At Wolf Constructions, we recognise these concerns and are committed to providing solutions to a better approach.

It's our privilege through this guide to reveal a building method that prioritises open communication, certainty, transparent processes, collaboration and genuine, face-to-face interaction.

With us, you're not just a client but a partner in the building journey.

CHAPTER 1

Laying the Foundation: How to maintain confidence throughout your building journey

CHAPTER 2

Communication is Key: How to Build a Partnership with Your Construction Team

CHAPTER 3

Financing Your Future: Navigating Budgets for High-End Custom Homes

CHAPTER 4

From Ground to Garden: How to Integrate Landscaping in Your Home Design

CHAPTER 5

The Final Countdown: Preparing for a Smooth Move-In

CHAPTER 1

Laying the Foundation: How to maintain confidence throughout your building journey

Embarking on the journey of building a custom home is a significant milestone, often accompanied by a mix of excitement and apprehension. Maintaining confidence throughout this process is crucial. With each decision from choosing the right builder and understanding your budget, to design and materials the process can feel daunting. However, with the right support, it can be transformed into a deeply rewarding and fulfilling experience.

We are here to provide the expert guidance you deserve each step of the way with:

- **Structured Planning:** Our team simplifies the process, enabling you to approach each phase with clarity and confidence for a stress-free journey.
- **Regular Updates:** We keep you in the loop, ensuring you feel connected and informed throughout every stage, providing you with genuine peace of mind.
- **Expert Guidance:** By leveraging professional insight, we help you to make informed decisions, so you can be confident in your choices.
- **Responsive Support:** We address questions and concerns promptly, ensuring you feel supported and valued while reinforcing the trust and stability of our professional partnership.

We strive to provide you with confidence and clarity throughout every stage of your project, ensuring a smooth transition from concept to completion.



CHAPTER 2

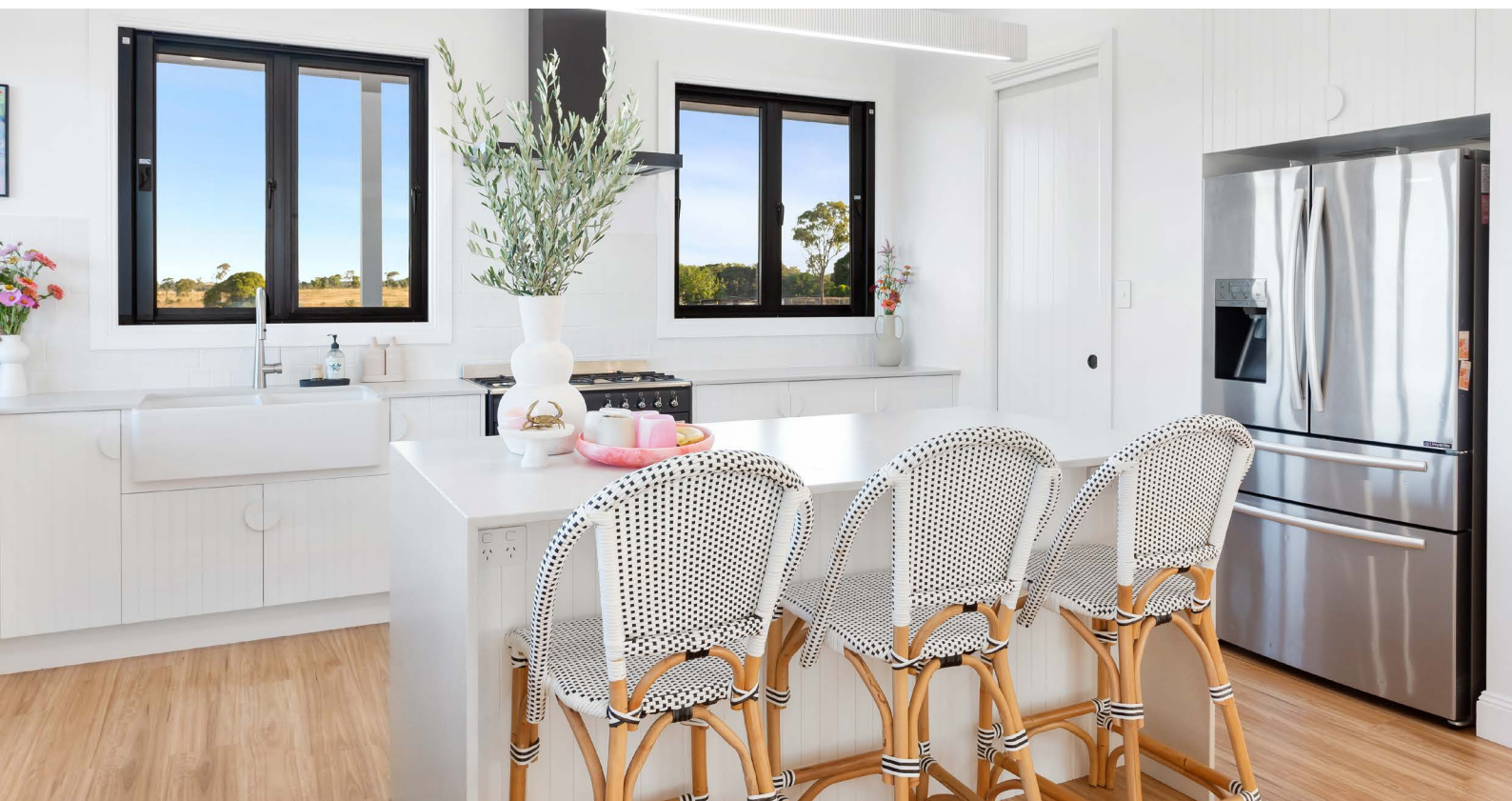
Communication is Key: How to Build a Partnership with Your Construction Team

Clear communication between homeowners and builders is critical but often overlooked, leading to uncertainties and a sense of disconnect during the construction process. Recognising the importance of this, effective strategies are essential to ensure a harmonious and transparent building journey.

Our team is dedicated to building a strong building partnership through:

- **An Organised Communication Structure:** Our team ensures to understand your vision and lifestyle needs. Once your project's blueprint is established, we provide regular and clear updates, allowing you to stay well-informed and involved in your home-build progress.
- **Open Dialogue Policy:** We are here to support you each step of the way. It's important to us to facilitate easy access to our team for any questions or queries you may have, providing timely responses to maintain your clarity and confidence.
- **Collaborative Decision-Making:** Our approach keeps you involved in all key decisions, enhancing your satisfaction with the end result. Through this approach, we believe your finished home will be a perfect reflection of your vision and unique needs.

Focusing on these communication strategies builds a strong, trust-based partnership with your construction team, leading to a more streamlined and enjoyable home-building experience. We aim to keep open communication as a pillar in all of our interactions with each client and bring a sense of stability and security every step of the way.





CHAPTER 3

Financing Your Future: Navigating Budgets for High-End Custom Homes

Many homeowners experience the challenge of finding the right balance between the dream of a high-end custom home and the financial practicality of making their vision come to life. We understand the importance of making your dream home a reality without compromising your financial well-being.

We aim to simplify your journey to owning a luxury custom home through:

- **Transparent Pricing:** We provide clarity on costs along with fixed pricing, enabling you to budget effectively, leading to financial peace of mind.
- **Expert Financial Direction:** You'll receive guidance with each step, maximising the value of your investment and helping you make informed decisions. Overall, leading to long-term satisfaction.
- **In-Depth Cost-Benefit Analysis:** We are devoted to ensuring you have a clear understanding of the value of your investment. To achieve this, we provide you with a detailed analysis and a structured framework, ensuring you make the most of your investment.

With Wolf Constructions, financing your custom home is an empowering journey that guarantees lifelong value and satisfaction. We offer transparent pricing and in-depth cost-benefit analysis to ensure your investment aligns with your lifestyle and financial well-being.

CHAPTER 4

From Ground to Garden: How to Integrate Landscaping in Your Home Design

Successfully integrating landscaping with home design is often a complex task for many of our clients. The desire to create a harmonious outdoor space that complements their new home is something that we deeply understand.

We offer seamless integration of landscaping in your home design:

- **Expert Design Consultation:** With a deep understanding of your overall vision through expert consultation, we can provide cohesive landscaping to tie the complete experience of your home all together.
- **Customised Landscaping Plans:** We cater to your lifestyle, providing functional and enjoyable outdoor areas to suit the way you like to live.
- **Seamless Architectural Integration:** With every landscape design, it's important to compliment the architecture of the home to elevate the aesthetic appeal, enhance its value, and create a unified and cohesive appearance.

Integrating landscape design into your new home is the key to bringing your property to life and creating a cohesive living experience. This journey transforms your outdoor space into not only an aesthetically pleasing environment but also a functional one. We aim to provide spaces that seamlessly blend with your lifestyle and can be enjoyed in every season, ensuring that your home's full potential is realised.





CHAPTER 5

The Final Countdown: Preparing for a Smooth Move-In

The complexity and excitement in the final stages of a project before moving into your new home can sometimes be overwhelming. We recognise the significance of this final step and the importance of finishing a project well.

At Wolf Constructions, we streamline your move-in process through our:

Detailed Completion Checklist: Ensuring every detail has been addressed, providing a worry-free transition to your new home.

Pre-Move Inspection: Guaranteeing excellence and offering you immediate comfort and satisfaction in your new environment.

Comprehensive Handover Process: We equip you with all the knowledge you need to know regarding your home and its features, enhancing your living experience from day one.

Post-Move Support: We provide continued assistance, ensuring a smooth adaptation to your new environment and confidence, knowing we're just a phone call away.

Entrusting Wolf Constructions with your handover and move-in process is a seamless and beneficial experience, enabling you to effortlessly embrace your new home and lifestyle.

Are you ready to take the next step in achieving your dream custom home?

Our team at Wolf Constructions invites you to a personalised consultation where your vision and queries can be met with clarity of what's possible.

Here's what you'll gain:

- You'll receive bespoke guidance, aligning your vision and budget with our expertise for clarity of what can be achieved
- A Detailed step-by-step path on how your vision can be brought to life
- Receive professional guidance to ensure your project will stay on budget and on schedule while balancing quality and affordability
- Discover what's critical to consider and avoid prior to project commitment to avoid common pitfalls
- Have all your project questions answered

[Request Consultation](#)

